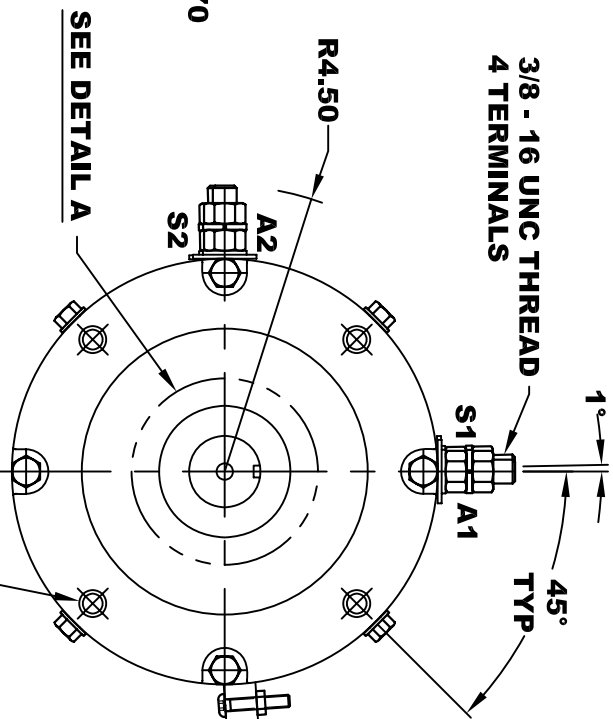
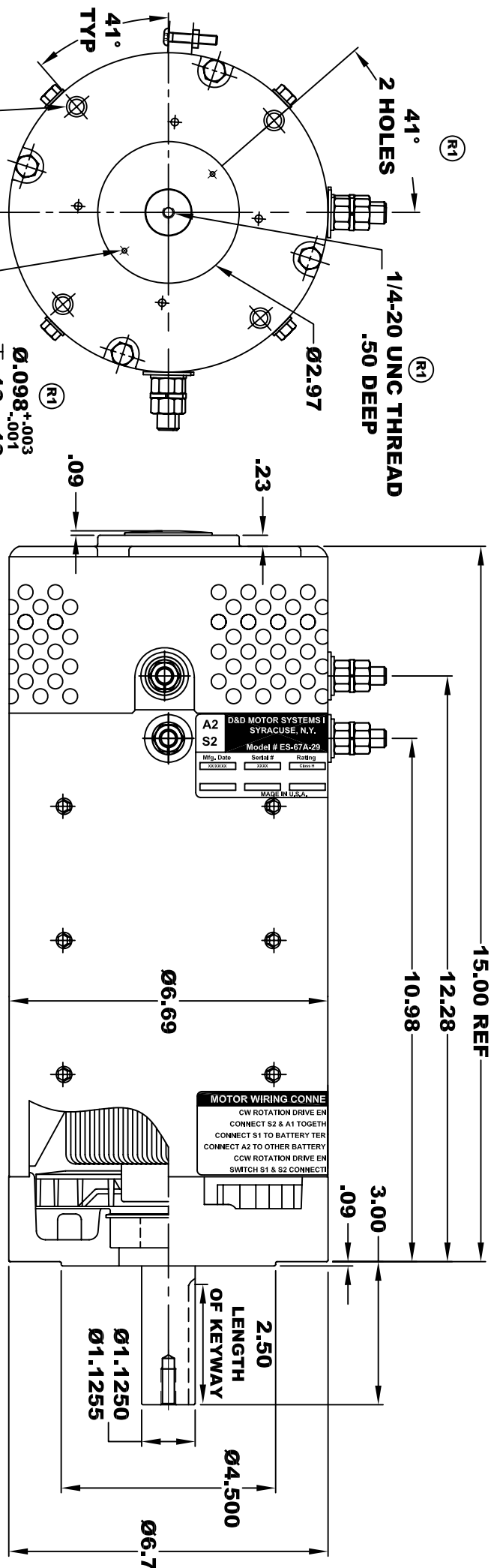


<b>D&amp;D MOTOR SYSTEMS INC.</b>		<b>A2</b>	<b>A1</b>
SYRACUSE N.Y.		<b>S2</b>	<b>S1</b>
Model # ES-67A-29			
Mfg. Date	Serial #	Rating	Voltage
XXXXXX	XXXX	CLASS H	XX
MADE IN U.S.A.			

**TORQUE SPECIFICATION FOR  
POWER CABLE SECURING TOP NUTS**  
3/8-16 UNC - 140 IN / LBS MAX



Ø 3/8 - 16 UNC THREAD  
TAPPED THRU  
.03-.05 x 45° CHAMFER  
4 PLACES, ON A Ø5.875 B. C.

Ø2.97

1/4-20 UNC THREAD  
.50 DEEP

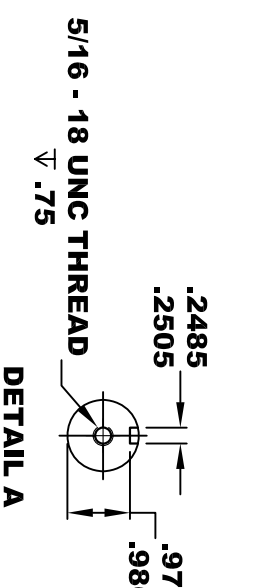
41°

2 HOLES

Ø.098<sup>+0.003</sup>  
-.001

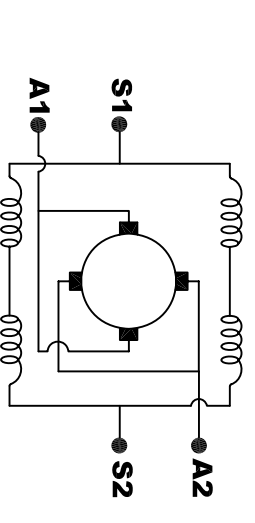
2 HOLES  
EQUALLY SPACED  
ON A 2.45 B.C.

41° TYP



3/8 - 16 UNC THREAD  
∇ .65 MINIMUM  
BREAK THRU PERMISSABLE  
.03-.05 x 45° CHAMFER  
4 PLACES, ON A Ø5.875 B. C.

**MOTOR WEIGHT: 83 LBS**  
**CLASS "H" INSULATION**  
**PERFORMANCE SPEC: 29**



**ELECTRICAL WIRING DIAGRAM**

**MOTOR WIRING CONNECTIONS:**  
**CW ROTATION DRIVE END**  
CONNECT S2 & A1 TOGETHER  
CONNECT S1 TO BATTERY TERMINAL  
**CCW ROTATION DRIVE END**  
CONNECT A2 TO OTHER BATTERY TERMINAL  
CONNECT S1 TO OTHER BATTERY TERMINAL  
**SWITCH S1 & S2 CONNECTIONS**

THIS PRINT IS THE PROPERTY OF D&D MOTOR SYSTEMS INC.  
DO NOT SCALE  
WORK TO DIMENSIONS  
TOLERANCES UNLESS OTHERWISE SPECIFIED ARE AS FOLLOWS

.XXX \_\_\_\_\_ .01  
.XX \_\_\_\_\_ .005  
.XX ROUGH CASTING \_\_\_\_\_ .03  
HOLES \_\_\_\_\_ -.001 / +.006  
ANGLES \_\_\_\_\_ 0°30"

<b>D &amp; D MOTOR SYSTEMS INC</b>			
<b>MOTOR OUTLINE</b>			
SIZE	DRAWN DATE	RELEASE DATE	DWG NO. / PART NO.
B	8-9-04		ES-67A-29
SCALE	STF	DRAWN BY	MJG
			REV DATE
			R1 1-20-05